



# TEST REPORT

**Commissioned by:** The Purples

**Factory:** The Purples

**Name of Sample:** Single-use Face Mask(non-sterile)

**Type, Specification:** A1M

**Testing Purpose:** Commission

**Testing Lab:** **Precise Testing & Certification  
(Guangdong) Co., Ltd. (PTC)**

**Address:** **Building 1, No. 6, Tongxin Road,  
Dongcheng Street, Dongguan, Guangdong**



# Test Report

Report No.:PTC21041400201C-EN01

Issue Date: Apr.27, 2021

Page 2 of 6

<b>Name of sample</b>	Single-use Face Mask(non-sterile)	<b>Type,Specification</b>	A1M
		<b>Trade Mark</b>	/
<b>Grade of sample</b>	Type IIR	<b>Sample No.</b>	/
<b>Testing purpose</b>	Commission	<b>Batch No.</b>	/
<b>Quantity of sample</b>	150pcs	<b>Package</b>	Sealed
<b>Sample Received Date</b>	Apr.19, 2021	<b>Completed Date</b>	Apr.27, 2021
<b>Testing Environment</b>	As requirement of testing standard		
<b>Commissioned by</b>	The Purples		
<b>Name &amp; Address of Factory</b>	The Purples		
<b>Testing Reference</b>	EN 14683:2019+AC: 2019		
<b>Testing Item</b>	General、Bacterial filtration efficiency、Microbial cleanliness(Bioburden)、 Splash resistance、Differential pressure		
<b>Remark</b>	Test results are attached as below		
<b>Note</b>	None		
<b>Prepare by:</b>  Arme	<b>Checked by:</b>  Jue	<b>Approved by:</b>  Tim Mo	

This report is issued according to the general clauses in [www.ptc-testing.com](http://www.ptc-testing.com) by PTC. Responsibility, guarantee and law restriction are defined in the general service clauses. The report is only responsible for the submitted sample(s) except as otherwise noted.  
The report could not be copied without permission

**Precise Testing & Certification (Guangdong) Co., Ltd. (PTC)**

Building 1, No. 6, Tongxin Road, Dongcheng Street, Dongguan, Guangdong, China.  
Tel: 86-769-38808222 Fax: 86-769-38826111 [http:// www.ptc-testing.com](http://www.ptc-testing.com)



# Test Report

Report No.:PTC21041400201C-EN01

Issue Date: Apr.27, 2021

Page 3 of 6

No.	Testing Item/ Unit		Requirements	Testing Result	Conclusion
1	General	Materials and construction	1) The medical face mask is a medical device, generally composed of a filter layer that is placed, bonded or moulded between layers of fabric. 2)The medical face mask shall not disintegrate, split or tear during intended use. 3)In the selection of the filter and layer materials, attention shall be paid to cleanliness.	Complied	PASS
		Design	1)The medical face mask shall have a means by which it can be fitted closely over the nose, mouth and chin of the wearer and which ensures that the mask fits closely at the sides 2)Medical face masks may have different shapes and constructions as well as additional features such as a face shield (to protect the wearer against splashes and droplets) with or without anti-fog function, or a nose bridge (to enhance fit by conforming to the nose contours).	Complied	PASS

This report is issued according to the general clauses in [www.ptc-testing.com](http://www.ptc-testing.com) by PTC. Responsibility, guarantee and law restriction are defined in the general service clauses. The report is only responsible for the submitted sample(s) except as otherwise noted.  
The report could not be copied without permission



# Test Report

Report No.:PTC21041400201C-EN01

Issue Date: Apr.27, 2021

Page 4 of 6

No.	Testing Item/ Unit	Requirements	Testing Result	Conclusion
2	Bacterial filtration efficiency(%)	Type I ≥95 Type II ≥98 Type IIR ≥98	100	Type IIR PASS
			100	
			100	
			100	
			100	
3	Microbial cleanliness (Bioburden)	Type I ≤30CFU/g Type II ≤30CFU/g Type IIR ≤30CFU/g	Sample1: (5.1g) 26CFU/g	Type IIR PASS
			Sample2: (5.1g) 27CFU/g	
			Sample3: (5.1g) 22CFU/g	
			Sample4: (5.1g) 23CFU/g	
			Sample5: (5.1g) 22CFU/g	
4	Splash resistance (Kpa)	Type IIR≥16.0	>16.0	Type IIR PASS
5	Differential pressure (Pa/cm <sup>2</sup> )	Type I <40 Type II <40 Type IIR <60	37.26	Type IIR PASS
			37.72	
			38.81	
			38.01	
			37.02	

This report is issued according to the general clauses in [www.ptc-testing.com](http://www.ptc-testing.com) by PTC. Responsibility, guarantee and law restriction are defined in the general service clauses. The report is only responsible for the submitted sample(s) except as otherwise noted.  
The report could not be copied without permission

**Precise Testing & Certification (Guangdong) Co., Ltd. (PTC)**

Building 1, No. 6, Tongxin Road, Dongcheng Street, Dongguan, Guangdong, China.  
Tel: 86-769-38808222 Fax: 86-769-38826111 [http:// www.ptc-testing.com](http://www.ptc-testing.com)



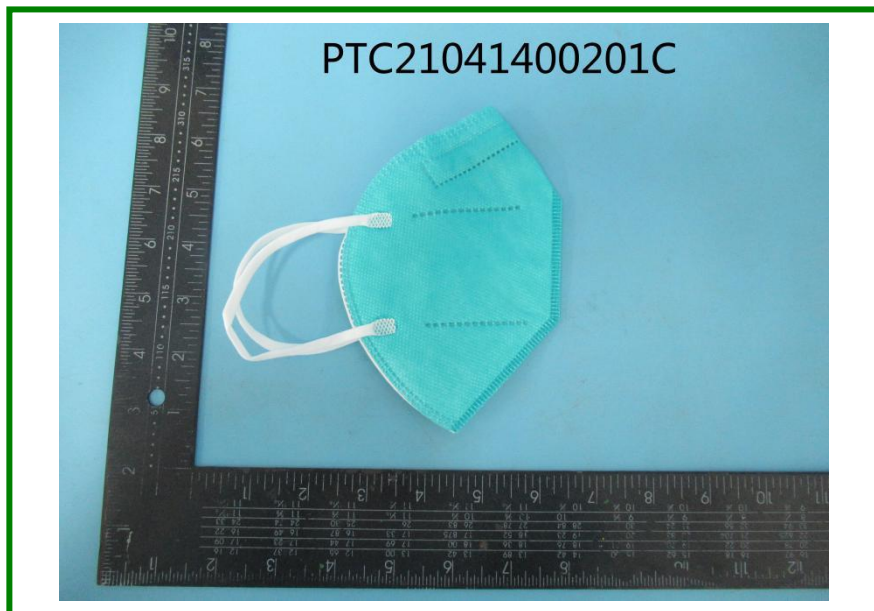
# Test Report

Report No.:PTC21041400201C-EN01

Issue Date: Apr.27, 2021

Page 5 of 6

Photo(s) of Sample:



This report is issued according to the general clauses in [www.ptc-testing.com](http://www.ptc-testing.com) by PTC. Responsibility, guarantee and law restriction are defined in the general service clauses. The report is only responsible for the submitted sample(s) except as otherwise noted.  
The report could not be copied without permission

**Precise Testing & Certification (Guangdong) Co., Ltd. (PTC)**  
Building 1, No. 6, Tongxin Road, Dongcheng Street, Dongguan, Guangdong, China.  
Tel: 86-769-38808222 Fax: 86-769-38826111 [http:// www.ptc-testing.com](http://www.ptc-testing.com)

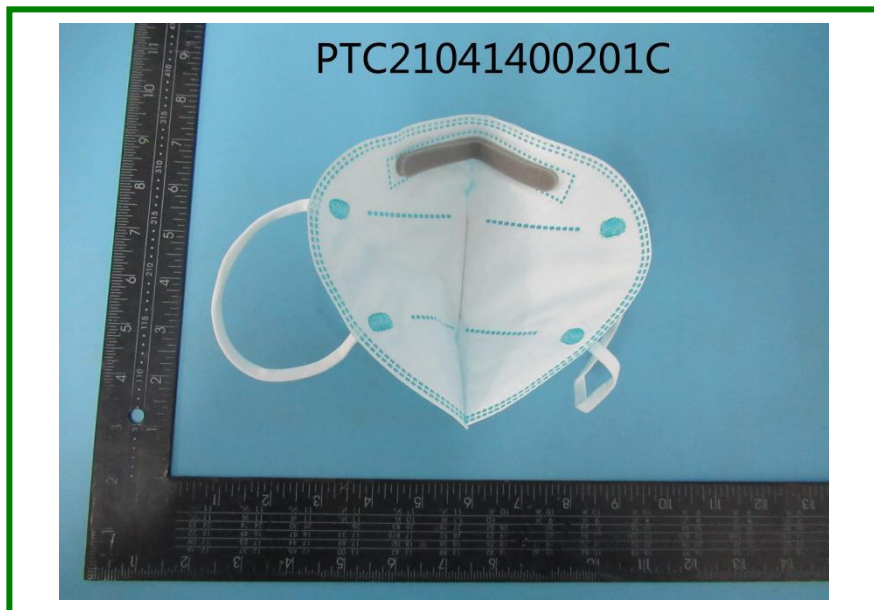
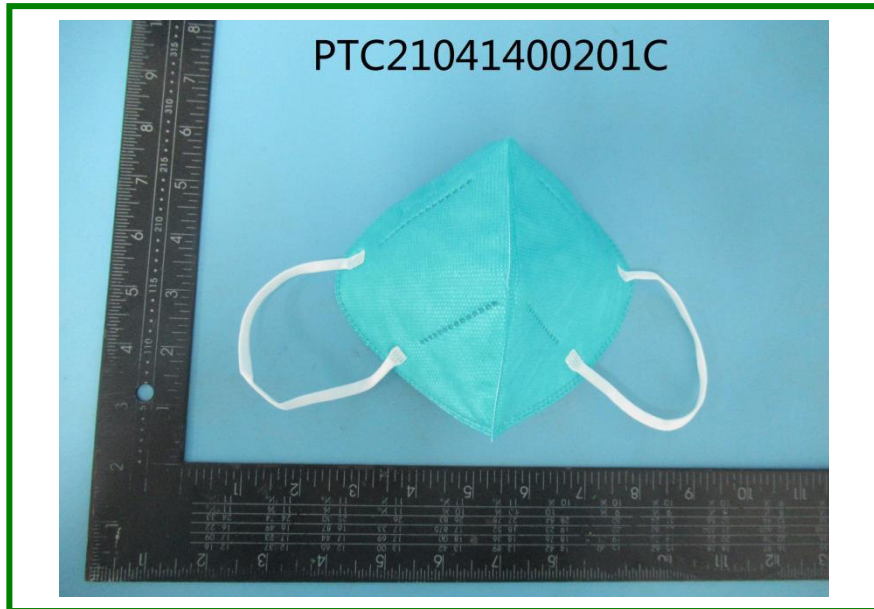


# Test Report

Report No.:PTC21041400201C-EN01

Issue Date: Apr.27, 2021

Page 6 of 6



\*\*\*End of Report\*\*\*

This report is issued according to the general clauses in [www.ptc-testing.com](http://www.ptc-testing.com) by PTC. Responsibility, guarantee and law restriction are defined in the general service clauses. The report is only responsible for the submitted sample(s) except as otherwise noted.  
The report could not be copied without permission

**Precise Testing & Certification (Guangdong) Co., Ltd. (PTC)**  
Building 1, No. 6, Tongxin Road, Dongcheng Street, Dongguan, Guangdong, China.  
Tel: 86-769-38808222 Fax: 86-769-38826111 [http:// www.ptc-testing.com](http://www.ptc-testing.com)